

PMDC GEAR MOTOR

ADEPT MOTOR

180 WATT

Frame Size: 90 x 90 mm

Continuous Operation, Carbon Brush Permanent Magnet Motor

Speeds are 3000 / 1500 RPM and further low speeds with Gearbox

Lead Wires for connection

Model	Output Power W	Current A	Supply Voltage V	Rated Torque Kg. Cm	Rated Speed RPM
90 180 4AWGI	180	7.5	24 V DC	7.5	1500
90 180 4AXGI	180	2	90 V DC	7.5	1500
90 180 4AYGI	180	1	180 V DC	7.5	1500

Gear motor Torque Table:

The maximum permissible torque is 200 kg.cm

Unit: kg.cm

RPM	500	416	300	250	200	166	120	100	83	60	50	41	30	25	20	16	15	12.5	10	8.3
Gear Ratio	3	3.6	5	6	7.5	9	12.5	15	18	25	30	36	50	60	75	90	100	120	150	180
Output Torque	24	28	40	48	60	72	90	108		128	162	196	200	200	200	200	200	200	200	200

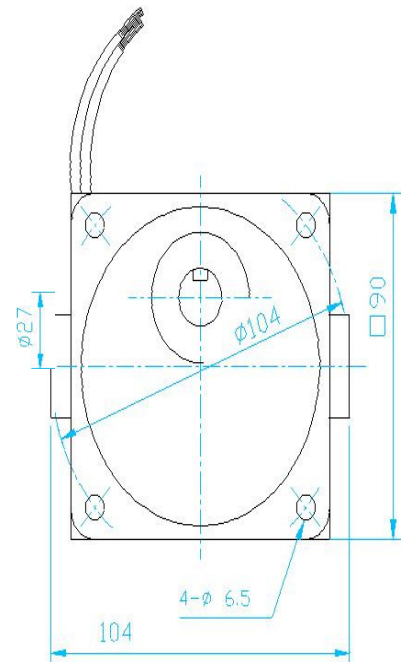
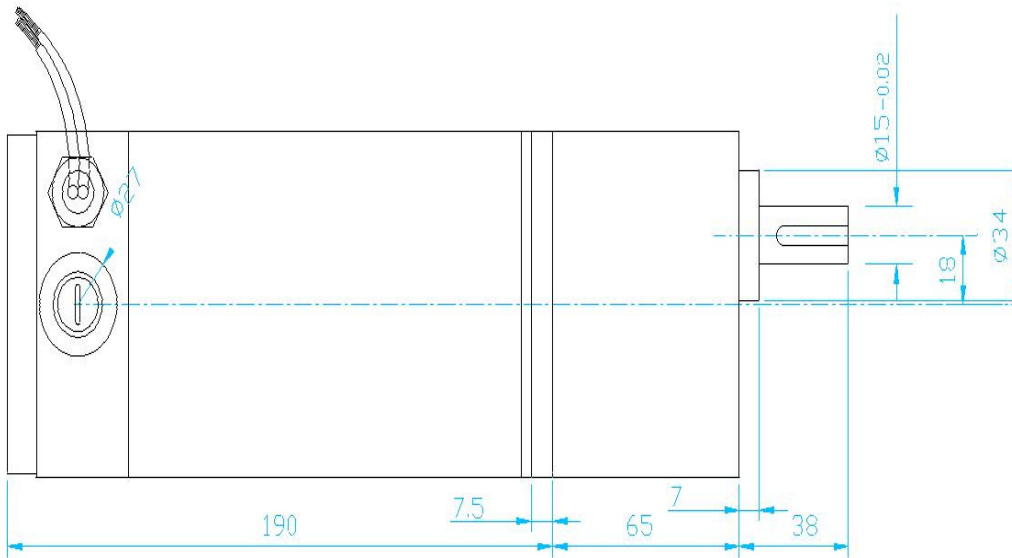
A Colored background indicates gear shaft rotation in the same direction; a White background indicates rotation in the opposite direction as the motor shaft

The Speed of Geared Motor is calculated by dividing the motor's Rated speed by the gear ratio. The actual Speed is 2~20 % less than the displayed value, depending on the size of the load. Characteristics, specifications and dimensions are subject to change without notice

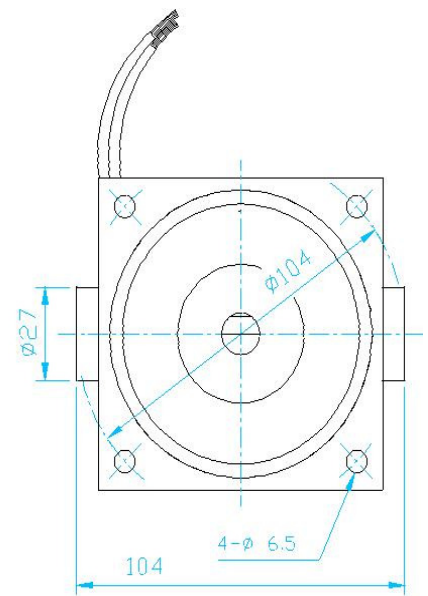
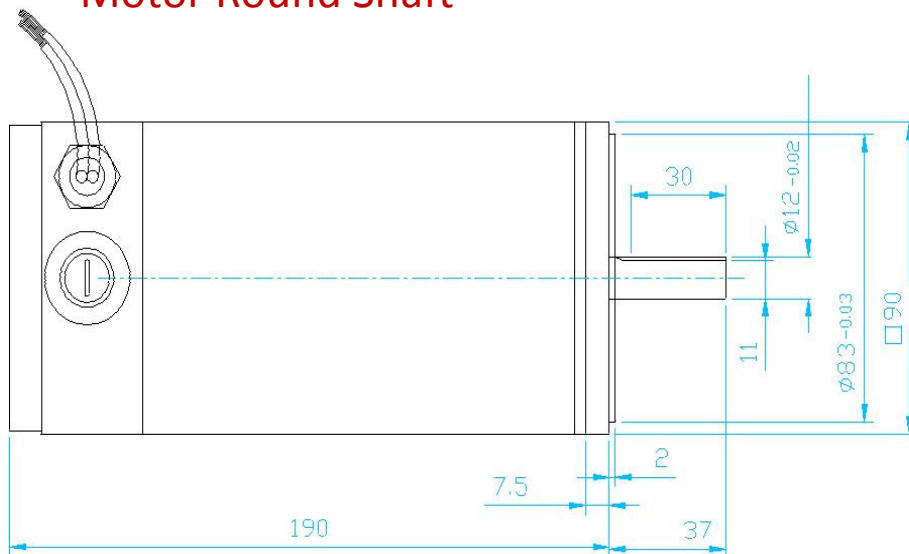
Dimensions

ADEPT MOTOR

Motor With Gearbox



Motor Round Shaft



Key and Keyway

